



# FEATURES/COMPARISONS – CYPRESS ADAPTIVE VALVES

## Applications

## Features

## Competing Products

## Cypress Adaptive Brand Benefits

Transfemoral knee disarticulation suction sockets or any suction socket where a removable insert is needed.



**Aria™ AK Valve**  
#CA100-AK

- Auto expulsion with push button release
- Installs into ALL materials (all types of thermoplastics and hard socket materials)
- Retro-Fits to Lyn Valve RV
- Easily disassembles for thorough cleaning
- Parts can be replaced, prolonging the life of the valve
- Reliable suction because of spring and diaphragm design (valve can get dirty and still function well)
- Low profile
- Rib lock housing design to reduce potential for spinning in socket
- AK Valve Key available (CA100-K) - facilitates easy removal of insert, especially for those with hand dexterity issues

ESP Lyn Valve RV  
Ossur Icelock 552  
Trulife Green Dot  
All AK valves

- Lower profile than the Lyn Valve RV from ESP and many other AK Valves
- Smooth anodized outer nut that will not catch clothing; Lyn RV has sharp edges on outer nut
- Has auto expulsion (Green Dot Valve is manual expulsion)
- You can disassemble the Aria AK insert with one snap. Lyn RV insert is more difficult to disassemble.
- Green dot and other AK valves do not have inserts that completely disassemble for cleaning so you cannot remove debris completely, reducing the life of the valve.
- Green dot, Ossur and other AK Valves do not have the spring and diaphragm internal configuration. They have a duck bill or metal valve which clogs much more easily than spring and diaphragm design.
- Aria AK is all black so it's less obtrusive, blends well with carbon sockets and does not show dirt as other white valves do.

Transfemoral, transfemoral knee disarticulation suction socket or any suction socket where a removable insert is NOT required.



**Aria™ Valve Plus**  
#CA200-AVP

- Auto expulsion with push button release
- Screw on/off cap design to prevent loss of cap and valve parts if valve is inadvertently bumped
- Housing for flexible sockets included
- Can be retro-fit to pre-existing hard sockets
- Small diameter and low profile
- Reliable suction because of spring and diaphragm configuration
- Holes in body allow for easy removal from recessed socket design with Aria Valve tool
- Completely disassembles for cleaning/parts can be replaced, which prolongs life of valve

Lyn Valve BK 2  
Ossur Icelock 551

- Lower profile than the Lyn Valve RV from ESP and many other AK Valves on the market
- Housing for flexible sockets included; Lyn Valve BK2 requires you to purchase housing separately
- Ossur Icelock 551 does not have spring and diaphragm so much more likely to clog and cannot clean as easily
- ESP BK 2 & Ossur 551 difficult to remove from socket if recessed, as they do not have holes in body to accommodate removal tool
- Aria Valve Plus is all black, so blends well with carbon sockets and does not show dirt
- Aria Valve Plus expels air more efficiently as it has 6 vent holes (Lyn BK2 has 2 and Ossur 551 has 3)
- More cost effective

Transfemoral suction socket or any suction socket that utilizes a sealing sleeve if a push button release is NOT desired and removable insert is not needed. Suction is released by removing sealing sleeve.



**Aria™ Valve**  
#CA200-AV

- Auto expulsion NO push button
- Screw on/off cap design to prevent loss of cap and valve parts if valve is inadvertently bumped
- Housing for flexible sockets included
- Can be retro-fit to pre-existing hard sockets
- Small diameter and low profile
- Reliable suction because of spring and diaphragm configuration
- Holes in body allow for easy removal from recessed socket design
- Completely disassembles for cleaning/parts can be replaced which prolongs life of valve

Lyn Valve BK

- Screw on/off cap add security/durability. Lyn Valve BK has snap-on cap that pops off if valve is bumped inadvertently
- Housing for flexible sockets included; Lyn Valve BK requires you to purchase housing separately
- ESP BK difficult to remove from socket if recessed, as it does not have holes in body to accommodate removal tool
- Aria Valve is all black so blends well with carbon sockets and does not show dirt
- Aria Valve expels air more efficiently as it has 6 vent holes, whereas competitor has 2
- More cost effective





# FEATURES/COMPARISONS – CYPRESS ADAPTIVE VALVES

## Applications

## Features

## Competing Products

## Cypress Adaptive Brand Benefits

An all-in one auto expulsion suction valve w/ built in barb connection for use with all elevated vacuum systems where a removable insert is not required.

- Auto expulsion with push button release
- Screw on/off cap design to prevent loss of cap and valve parts
- Housing for flexible sockets included
- Can be retro-fit to pre-existing hard sockets
- Small diameter and low profile
- Reliable suction from spring and diaphragm configuration
- Holes in body allow for easy removal from recessed socket design
- Completely disassembles for cleaning/parts can be replaced
- Built-in barb fitting for attachment of hose
- Barb fitting has internal check valve to prevent loss of vacuum if hose disconnects or becomes damaged

Ossur Unity Valve

- Aria Hybrid much more reliable suction, secondary to spring and diaphragm configuration. Competitor uses duck bill configuration which becomes clogged easily and prevents valve from working
- The barb fitting on the Aria Hybrid has an internal check valve to prevent loss of vacuum
- Aria Hybrid Valve is all black so it blends well with carbon sockets and does not show dirt
- Aria Hybrid Valve expels air more efficiently as it has 6 vent holes

All types of suction sockets where a distally mounted valve is preferred to a socket mounted valve.

- Auto expulsion with push button release
- Easy installation - simply bolts on to any socket that has a 4-hole plate distally. Can be retro-fit to pre-existing sockets
- Low build height (1/2")
- Reliable suction from spring and diaphragm configuration
- Completely disassembles for cleaning/parts can be replaced
- Easily moved from one socket to another (i.e. from temporary socket to definitive socket)

Evolution Plate Valve System

- Aria Plate Valve more reliable suction, secondary to spring and diaphragm configuration. Competitor uses duck bill configuration which becomes clogged easily and prevents valve from working
- Ease of installation: Aria Plate Valve simply bolts on in minutes with included seal. Competitors more complicated, many separate parts and kits
- Aria Plate Valve expels air more efficiently
- More cost effective

All types of suction sockets with elevated vacuum where a distally mounted valve is preferred. An all-in one auto expulsion suction valve w/ built in barb connection.

- Auto expulsion with push button release
- Built in barb fitting for high vac hose connection; barb has built in check valve
- Easy installation - simply bolts on to any socket that has a 4-hole plate distally. Can be retro-fit to pre-existing sockets
- Low build height (1/2")
- Reliable suction from spring and diaphragm configuration
- Completely disassembles for cleaning/parts can be replaced
- Easily moved from one socket to another
- Comes with plug to replace barb fitting so can be converted into a simple suction valve

Evolution Plate Valve System

- Aria HV Plate Valve more reliable suction, secondary to spring and diaphragm configuration. Competitor uses duck bill configuration which becomes clogged easily and prevents valve from working
- Ease of installation: Aria HV Plate Valve simply bolts on in minutes with included seal. Competitors more complicated, many separate parts and kits
- Aria HV Valve expels air more efficiently
- More cost effective

All types of suction sockets or elevated vacuum where space is an issue and a distally-mounted valve system is preferred.

- Simply thread in insert of choice for desired application (auto expulsion suction, high vac straight fitting, high vac 90 degree fitting or solid plug)
- Does not increase build height
- Reliable suction with auto-expulsion insert because of spring and diaphragm configuration
- Completely disassembles for cleaning/parts can be replaced

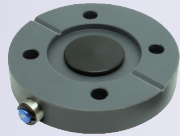
Evolution 4-Hole Plate Valve System

Bull Dog 4-Hole Plate and Insert

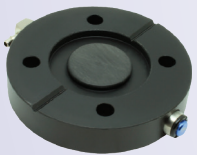
- More reliable suction secondary to spring and diaphragm configuration
- Competitor uses duck bill configuration which becomes clogged easily and prevents valve from working
- Aria Valve expels air more efficiently
- More cost effective



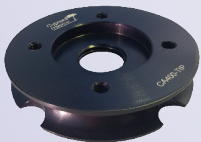
**Aria™ Hybrid Valve**  
#CA300-HYV



**Aria™ Plate Valve**  
#CA300-APV



**Aria™ HV Plate Valve**  
#CA300-AHVP



#CA400-TIP

**Cypress 4 Hole Plate & Valve Insert System**

